

**Materials and Services  
for Aerospace and High-Tech Industries**

Manufacturing of spare parts, semi-finished /  
pre-fabricated repair materials, assemblies and  
components



Member of the  
**Interturbine Group of Companies**

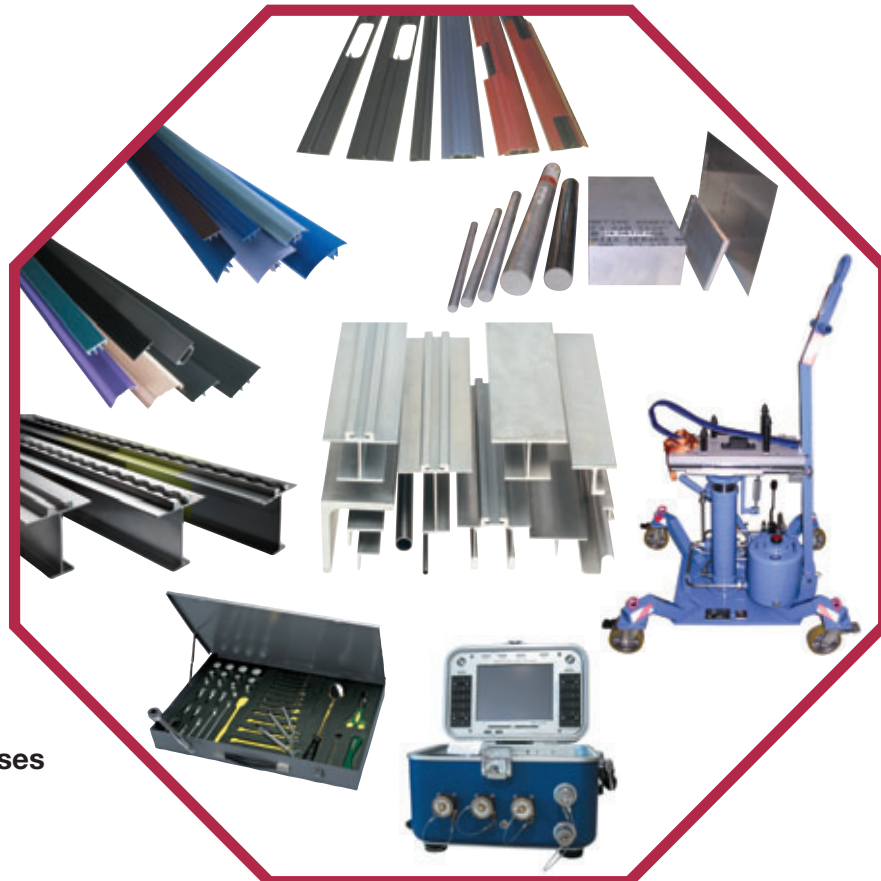


# Products - Services - Equipment

---

## Current Business Segments

- **Manufacturing of Products out of Metal, Plastic, Rubber and Silicone for Assembly, Refurbishment, Maintenance, Modification and Repair e.g. Raceways and Seat Track Covers**
- **Semi-Finished Seat Tracks**
- **Tool Control Systems**
- **Component Control Systems**
- **Inspection, Maintenance, Repair, Calibration and Certification of Maintenance Tooling**
- **Ground Support Equipment**
- **Air Cargo Containers and Trolleys**
- **Special / Shock Proof - Transport Cases for Sensitive Equipment**



## Customer Benefits

- **Cost savings and fast aircraft turn-around into service**
- **Reduction of raw material stocks / no expenses for extensive stock holding**
- **TCS (Tool Control System) for reliable and cost-efficient tool count - Tool control ensures safety**
- **Advanced MRO line maintenance by using CCS (Component Control System) to enhance work processes**
- **Customized foam inserts for secured aircraft parts transportation**

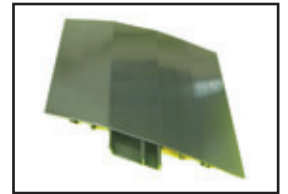
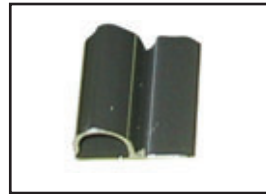
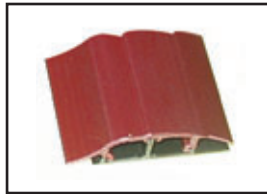
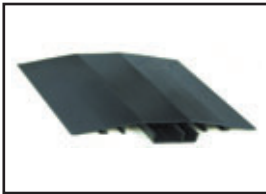


# Metal, Plastic, Rubber and Silicone Products for Manufacturing, Maintenance, Modification and Repair

## Manufacturing of semi-finished / finished parts

- cut-outs for feed-through
- detail parts manufacturing (e.g. raceway and seat track covers)
- CNC and conventional machining of Al, Ti, Fe, reinforced foam, plastic, Teflon™ and other raw materials

- CNC milling and drilling (sections, sheet metals, composites)
- cutting (belt- and bladesaws, sheet shears)
- marking (inkjet, engraving)
- manufacturing of tooling devices
- surface treatment including galvanic plating

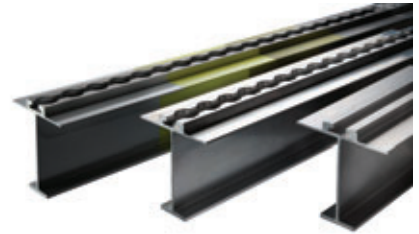


### Cost savings through:

- prefabricated repair spares
- faster aircraft turn-around
- no expenses for stock holding



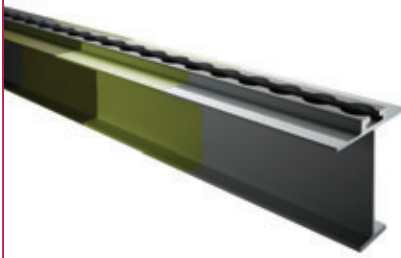
Part Number	Description	Colours
ABS0317AA	Seat Rail Cover	As per Airbus Interior Colour (AIC) Code Chart (formerly DA-Colour Code) e.g. ABS5643AA29-6, Seat Rail Cover Dark Blue (AIC29.6)
ABS0317AB	Seat Rail Cover	
ABS0318	Seat Rail Cover	
ABS5033	Seat Rail Cover	
ABS5096	Seat Rail Cover	
ABS5643	Seat Rail Cover	
ABS5098	Race Way	
ABS5637	Race Way	
ABS5642	Race Way	
ABS5644	Race Way	
Several ABS, DAN, ASNA and NSA Plastic Profiles		

# Semi-Finished Seat Tracks



Interturbine Technologies GmbH provides the full range of services to meet customer's demand for seat track repairs:

- Raw material sections cut to requested length
- Machining of mounting seat holes (notches) according to the Airbus structural repair manual (SRM) or customer specification
- Surface treatment (anodizing & painting) of final machined seat track segment
- Delivery of prepared seat tracks, including seat track cover if required

Raw Material Extrusion		Seat Track Segment Semi-finished (SFS-D)		Seat Track Segment Semi-finished (SFS-DAP)		
						
T-Profile Aluminium		Extrusion including: - Drilling / milling notches according to SRM		Extrusion including: - Drilling notches - Anodizing surface - Painting surface according to SRM		
Raw Mat. No.	ITL No.	ITL Description	ITL No.	ITL Description	ITL No.	Aircraft Type
A53274005	108590ITL	A53274005 SFS-D	125141ITL	A53274005 SFS-DAP	172563ITL	A300/310/330/340
ABS5080A536	154174ITL	ABS5080A536 SFS-D	168808ITL	ABS5080A536 SFS-DAP	173210ITL	A330/340
ASNA2506	118119ITL	ASNA2506 SFS-D	168804ITL	ASNA2506 SFS-DAP	173211ITL	A330/340
ASNA2566	129610ITL	ASNA2566 SFS-D	125368ITL	ASNA2566 SFS-DAP	173401ITL	A330/340
ASNA2473	117109ITL	ASNA2473 SFS-D	173213ITL	ASNA2473 SFS-DAP	134849ITL	A330/340
ASNA2223	105478ITL	ASNA2223 SFS-D	173400ITL	ASNA2223 SFS-DAP	134850ITL	A320/321
D53070011	105826ITL	D53070011 SFS-D	173215ITL	D53070011 SFS-DAP	134852ITL	A320/321
NTA44768	128273ITL	NTA44768 SFS-D	167867ITL	NTA44768 SFS-DAP	217937ITL	ATR42/72
BAC1520-1055	111172ITL	BAC1520-1055 and	111172ITL			BC-767
BAC1520-1545	128861ITL	Drilling service	133746ITL			BC-767

\* Length 6.0 meter, customized length available on request

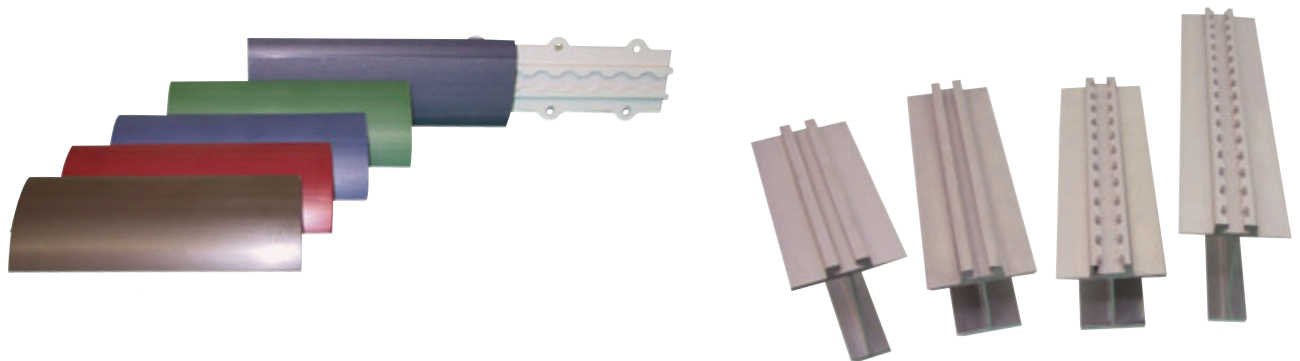
SFS-DAP: (SFS) semi-finished seat track segment, including

- (D) Drilled seat mounting holes (notches)
- (A) Anodized complete surfaces
- (P) Painted complete surfaces

# Semi-Finished Seat Tracks

## Customer benefits:

- Savings in cost through cut-out process in accordance with the SRM
- No scrap, customized lengths of semi-finished seat tracks to individual requirements
- No minimum order quantity, supply of lengths as needed
- Savings in cost and time for internal machining and surface treatment
- Savings in storage space as it reduces the need to hold large stocks
- Savings in purchasing of raw material
- Reduced lead times / reduced aircraft maintenance turn-around time
- Full AOG support for finished or semi-finished repair spares
- Full support for aircraft with Heavy Maintenance through Interturbine's network of regional warehouses



Consumable materials for cut-out edges area are available on request:

Surface

pre-treatment: Alodine-1200, Article no. 121980ITL

Wash primer: Metaflex FCR  
Article no. 106945ITL

Primer: Aerodur Primer S15/90 or 37035a  
Article no. 102263ITL or  
106483ITL  
or Seevenax 113-22  
Article no. 147780ITL  
or PAC33 4355/3600  
Article no. 102236ITL

Top coat grey: Aerodur Finish C21/100 BAC707  
Article no. 104767ITL  
or Alexit 406-22  
Article no. 114427ITL

Brushing

Sealant: Various



Hi Loks, Clip-Nuts, Edge Protections, Sealant Tapes, L-Profiles, Doublers, Nut Plates etc.

# Tool Control System & Component Control System

Leaving a tool in an aircraft or engine is not just an inconvenience, it is a safety risk. Realizing this, Interturbine Technologies GmbH designs and manufactures Tool Control System and Component Control System kits for airlines and maintenance companies. The precision-cut foam enables engineers to see at a glance which tool is missing. → Tool control enhances safety.

Manufacturing / machining of precision-cut foam inserts used as:

- Tool Control System (TCS)
- Component Control System (CCS)
- special - shock proof - packing, e.g. for high value components, instruments

Manufacturing / machining of foam inserts:

- manufacturing of standard or customized tool control / component control inserts
- shrink foil packaging of equipped inserts

Customized solutions through:

- individualized tool and component scanning and insert layout

Individual solutions for fabrication of:

- tool / component / equipment inserts
- thermal insulation packaging
- transportation containers
- safe pack for fragile products

Built-in safety:

- durable foam inserts and trays hold the tools firmly in place and protect against damage
- potentially lost tooling or component is quickly identified with the TCS or CCS foam inlays



# Inspection, Maintenance, Repair, Calibration and Certification of Maintenance Tooling

Interturbine Technologies GmbH offers inspection, calibration and maintenance of tools, gauges and testing equipment certified according to national and international standards supporting airlines, production and maintenance companies.

## Inspection methods

- 3-dimensional measurement inspection
- non-destructive testing (fluorescent penetrant inspection)
- visual, load pressure, temperature

## Inspection of

- aircraft inspection tools / gauges (incl. functional testing and maintenance)
- general checking fixtures (incl. repair / replacement)
- hydraulic load cells

## Inspection, calibration and maintenance services of

- hot bonding equipment for aircraft repair processes



Torque wrench calibration

## Inspection, repair, calibration and coding of typical tooling

- elevator neutral setting gauges
- air hydraulic tool kits
- digital force gauges
- dynamometric adaptors
- rudder neutral adjustment tools
- backlash checking tools
- push-pull gauges
- aileron neutral setting jigs
- jack point weighing sets - road runners
- rudder pedal load measuring sets
- measuring tools
- torque wrenches
- hydraulic load cells
- wing auxiliary jacking or cradle sets incl. hydraulic load cells for stationary aircraft maintenance
- portable ovens for aircraft structure repair
- outboard flap template sets
- digital thermometers and thermocouples

# Ground Support Equipment (GSE)

## Lifting Device with multi-purpose support base frame

This customized multi-purpose lifting device is applicable for removal and installation of all types of Integrated Drive Generators (IDG), fuel pumps, engine starters, hydraulic pumps, etc. of jet engines and other equipment.

The lifting device can be customized according to customer's requirements.



### Benefits

- Light weight
- Portable
- Easy to handle
- Cost reduction
- High safety standards

### Technical Data Information

Article no. 215672ITL

Main functions of multi-purpose support base frame	Typical characteristics and technical information		Dimensions / Weight / Colour
Applicable for removal and installation of IDG / CSD and various components, i.e. for:	Capacity	100 kg (220 lbs)	810 x 920 x 707 mm
PW100A/TF33	Closed Height (without support plate)	650 mm	90 kg
V2500, CFM56 Serie	Hydraulic Stroke	1000 mm	Customized colour / varnish
CF6-80, PW4000 Serie	Operating temperature	-20° to +60°C	
CFM56 Serie	Typical Positioning Fixture for IDG is modular and movable	X- / Y- axis	
JT8D, CFM56 Serie	Manual horizontal tilting adjustment on each axis	+/- 10°	
JT9D, RB211, CF6-80, PW4062			
PW2000, RB211			
PW4062, CF6-80, RB211			
PW4000 Serie, GE90			

# Ground Support Equipment (GSE)

Broad expertise - in design, processing, manufacturing, assembly and quality control - combined with world-wide operations enable Interturbine Technologies GmbH in cooperation with partners to design and create individual products and services.

## Project Development Process

The project development process is very extensive and consists of different phases.



All designs, drawings etc. are made by high-tech CAD/CAM - 3D computer system.

**Quality** is the main focus. All Interturbine GSE Aerospace Products possess the following features:

- built under strict factory QM-QS management system
- main structure in St 52.3 with certificates
- all fasteners are min. 10.9 material quality
- all lifting attachments and turbine mounts are in high quality alloy steel, ultra sonic inspected
- standard heat treatment
- relevant welding MP inspected
- strength calculation based on "Fan blade failure"
- start air and bleed air tubing in stainless
- CE certificate included
- operation and maintenance manual according to EC standard

## Product Information

### Universal Transport Trailer

The trailer is a highly flexible system in size and design. The trailer includes an arm adjustment for adapter acceptance. A great variability by different adapting devices is possible.



### Engine Transportation Trailer

The Engine Transportation Trailer is a self contained trolley for transportation between workshop and test cell.



### Auxiliary Power Pack for engine trolley

The auxiliary power pack is used with the engine trolley for removal, installation and handling of aircraft engines.



# Air Cargo Containers, Trolleys & Customized Packing Boxes

---

**Interturbine Technologies GmbH** is your partner for high quality Air Cargo Containers, Trolleys and Customized Packing Boxes for all tools, aircraft parts and equipment. The customized foam inserts are made for secure tools and aircraft parts transport packing.

## Air Cargo Containers

**Interturbine Technologies** supplies various air cargo containers (LD, LW, temperature controlled) for the transport of cargo and baggage, air cargo pallets (standard and heavy-duty) as well as cargo nets and tie down straps.

Light weight version of the containers can also be developed according to customer's specifications.



## Trolleys and Customized Packing Boxes

**Interturbine Technologies** develops and supplies customized trolleys for the secure transportation, assembly and disassembly of delicate products / equipment such as cabin windows.

Customized foam inserts are developed for secure tools and aircraft parts transport packing.



Other special-shock-proof-packing boxes can also be designed and manufactured. Please contact **Interturbine Technologies** for further information.

# Contact Offices and Distribution Centers



Availability: 24/7 AOG Service Support  
 Service Support Information: [www.interturbine.com](http://www.interturbine.com)  
 Material Service Support Information also in  
 ILS - Inventory Locator Service. Additional service  
 offices in various countries around the world.

**WORLDWIDE 24 / 7 HOTLINE**  
**Phone: +49 4191 809 444**  
**e-mail: [aog@interturbine.com](mailto:aog@interturbine.com)**

## HEADQUARTERS GERMANY

### Interturbine Technologies GmbH

Kisdorfer Weg 36 - 38  
 24568 Kaltenkirchen - Germany  
 Supplier Code: D4827  
 SITA: HAMIBCR · SPEC 2000  
[www.interturbine.com](http://www.interturbine.com)  
 e-mail: [itt@interturbine.com](mailto:itt@interturbine.com)  
 Phone: +49 4191 809 600  
 Fax: +49 4191 809 633

\* SITA: HAMIBCR · SPEC 2000  
 (Europe (except for UK), South Africa, Asia)

\*\* SITA: DFWIBXD · SPEC 2000  
 (USA and Canada)

\*\*\* SITA: LONAACR · SPEC 2000  
 (UK)

### Interturbine Aviation Logistics GmbH France

AEROPARC Saint Martin du Touch  
 BAT C02, 12 rue de Caulet  
 31300 Toulouse - France  
 Supplier Code: FAHW6 \*

e-mail: [france@interturbine.com](mailto:france@interturbine.com)  
 Phone: +33 5 34 40 0670  
 Fax: +33 5 34 40 0679  
**AOG Phone: +33 6735 23446**

### Interturbine Aviation Logistics Ltd. UK

37 Edison Road  
 St. Ives, Cambs. PE27 3GZ - UK  
 Supplier Code: KA739 \*\*\*

e-mail: [unitedkingdom@interturbine.com](mailto:unitedkingdom@interturbine.com)  
 Phone: +44 1480 377 111  
 Fax: +44 1480 356 074  
**AOG Phone: +44 7887 967 694**

### Interturbine Czechia s.r.o. Czechia

Naskové 1189/1  
 150 00 Praha 5 - Košíře - Czech Republic  
 Supplier Code: 3810G \*

e-mail: [czechia@interturbine.com](mailto:czechia@interturbine.com)  
 Phone: +420 234 280 160  
 Fax: +420 234 280 191  
**AOG Phone: +420 234 280 190**

### Interturbine Hungary Kft. Hungary

Széchenyi u. 1.  
 2234 Maglód - Hungary  
 Supplier Code: 1004V \*

e-mail: [hungary@interturbine.com](mailto:hungary@interturbine.com)  
 Phone: +36 29 526 071  
 Fax: +36 29 328 740  
**AOG Phone: +36 30 574 0894**

### Interturbine-RuSky ooo Russia

Serebryakova str. 14, office 304-306  
 129343 Moscow - Russia

e-mail: [russia@interturbine.com](mailto:russia@interturbine.com)  
 Phone: +7 495 989 2327  
 Fax: +7 495 989 2327

### Interturbine Aviation Logistics GmbH USA / Texas

2617 N. Great Southwest Parkway, Suite 200  
 Grand Prairie, TX 75050 - USA  
 Supplier Code: 09XN1 \*\*

e-mail: [texas@interturbine.com](mailto:texas@interturbine.com)  
 Phone: +1 817 633 8377  
 Fax: +1 817 633 5672  
**AOG Phone: +1 817 475 6008**

### Interturbine Aviation Logistics GmbH USA / Florida

5775 Blue Lagoon Drive, Suite 240  
 Miami, FL 33126 - USA  
 Supplier Code: 3CQ94 \*\*

e-mail: [florida@interturbine.com](mailto:florida@interturbine.com)  
 Phone: +1 786 337 8144  
 Fax: +1 786 337 8225  
**AOG Phone: +1 817 475 6008**

### Interturbine Aviation Logistics GmbH USA / Washington

Representative Office  
 12819 SE 38th Street, PMB # 72  
 Bellevue, WA 98006 - USA  
 Supplier Code: 4KW03 \*\*

e-mail: [washington@interturbine.com](mailto:washington@interturbine.com)  
 Phone: +1 425 644 5544  
 Fax: +1 425 609 1287  
**AOG Phone: +1 817 475 6008**

### Interturbine Aviation Logistics GmbH Canada

Representative Office  
 5, rue Gênes  
 Candiac, QC., J5R 3X2 - Canada  
 Supplier Code: L5383 \*\*

e-mail: [canada@interturbine.com](mailto:canada@interturbine.com)  
 Phone: +1 450 632 0647  
 Fax: +1 450 632 6749  
**AOG Phone: +1 817 475 6008**

### Interturbine Aviation Logistics FZE United Arab Emirates

c/o Airbus Middle East, Dubai Airport Free Zone  
 P.O. Box 54982  
 West Ring Road, Plot 20 & 22  
 Dubai - United Arab Emirates  
 Supplier Code: SGL04 \*

e-mail: [dubai@interturbine.com](mailto:dubai@interturbine.com)  
 Phone: +971 4 7030 418  
 Fax: +971 4 2995 853

### Interturbine Aviation Logistics GmbH P.R. China

CASC / Airbus Customer Services Support Centre  
 Tianzhu Airport Industrial Zone  
 Tianzhu Donglu 5, Shunyi County  
 P.O. Box 3412, Beijing 101312 - P.R. China  
 Supplier Code: SF188 \*

e-mail: [china@interturbine.com](mailto:china@interturbine.com)  
 Phone: +86 10 8048 6340  
 ext. 4029  
 Fax: +86 10 8048 6877  
**AOG Phone: +86 1300 113 5772**

### Interturbine Aviation Logistics GmbH Japan

Representative Office  
 Shimizu Building 5F  
 2-31-20 Ikejiri  
 Setagaya-ku, Tokyo 154-0001 - Japan

e-mail: [japan@interturbine.com](mailto:japan@interturbine.com)  
 Phone: +81 3 6868 3169  
 Fax: +81 3 4496 4002  
**AOG Phone: +86 1300 113 5772**

### Interturbine Aviation Logistics GmbH Singapore

36 Loyang Drive  
 Singapore 508949  
 Supplier Code: QB284 \*

e-mail: [singapore@interturbine.com](mailto:singapore@interturbine.com)  
 Phone: +65 654 69858  
 Fax: +65 654 27640  
**AOG Phone: +65 9740 7731**

### Interturbine Aviation Logistics GmbH India

Liaison Office  
 No. 209, 2<sup>nd</sup> floor, Prestige Omega  
 No. 104, EPIP Zone, Whitefield  
 Bangalore 560066 - India

e-mail: [india@interturbine.com](mailto:india@interturbine.com)  
 Phone: +91 80 4060 0811  
 Fax: +91 80 6688 5981  
**AOG Phone: +65 9740 7731**

### Interturbine Advanced Logistics Pty Ltd. Australia

17 Ashtan Place  
 Banyo QLD 4014 - Australia  
 Supplier Code: Z0CQ1

e-mail: [australia@interturbine.com](mailto:australia@interturbine.com)  
 Phone: +61 7 3292 5200  
 Fax: +61 7 3292 5220  
**AOG Phone: +61 435 113 492**

### Interturbine Aviation Logistics GmbH South Africa

Prospur Business Park, Unit A04, Oscar Street,  
 Hughes, Boksburg 1461 - South Africa  
 Supplier Code: SBT45 \*

e-mail: [southafrica@interturbine.com](mailto:southafrica@interturbine.com)  
 Phone: +27 11 826 1167  
 Fax: +27 11 826 2628  
**AOG Phone: +49 4191 809 444**

